



MEDIUM WHEEL LOADER RIG OUT CATALOG AFTERMARKET KITS AND WORKTOOLS

MODELS: 950, 962, 966, 972, 980 and 982

BUILDS: 14A (PERFORMANCE & XE) & 01B (GC)

LET'S DO THE WORK.™



CONTENTS

UPGRADE AND ENHANCEMENT KITS

GUARDING

POWERTRAIN GUARD	2
FRONT WINDOW GUARD	2
ROADING FENDERS	3

MAINTENANCE IMPROVEMENT

AUTOLUBE	4
AUTOLUBE RESERVOIR	4
AXLE OIL COOLER	5

PERFORMANCE & PRODUCTIVITY

HYDRAULICS (3V)	6
HYDRAULIC CONTROLS (3V LEVER)	6
HYDRAULIC CONTROLS (2V JOYSTICK)	7
ADVANCED PAYLOAD	7
VARIABLE PITCH FAN	8
PCS PRINTER	8

SAFETY & VISIBILITY

HIGH MOUNT CAMERA	9
MULTIVIEW CAMERA	9
SECONDARY CAMERA DISPLAY	9
CAT OBJECT DETECTION	10
PRODUCT LINK™	10
CAB PRECLEANER	11
PRECLEANER - PRESSURE MONITOR	11
LED LIGHTS	12
REVERSING STROBES LIGHTS	12
SERVICE AND ACCESS LIGHTING LIGHTS	13
WHEEL CHOCKS	13
EXTINGUISHER MOUNT	13

WORKTOOLS

LINKAGE COMPATIBILITY	15
COUPLERS	16
BUCKETS	17
BUCKET TABLE	18
GENERAL PURPOSE PERFORMANCE SERIES	19
FLAT FLOOR BUCKETS	21

ROCK PERFORMANCE SERIES	23
HIGH DUMP BUCKETS	24
WOODCHIP BUCKETS	25
WASTE LOAD & CARRY BUCKETS	26
WASTE -DOZING BUCKETS	26
WASTE TAMP & CLAMP BUCKETS	27
COAL BUCKETS	28
SIDE DUMP BUCKETS	28
MULTI-PURPOSE BUCKETS	29
SLAG BUCKETS	30

TIPS	31
------------	----

FORKS

PALLET FORKS	33
CONSTRUCTION FORKS	34
MILLYARD FORKS	35
MILLYARD POLE FORKS	35
LOGGING FORKS	35
UNLOADING GRAPPLE FORKS	36
SORTING GRAPPLE FORKS	36
LOG & LUMBER FORKS	37
SEMI-MILLYARD TOP CLAMP	37
PIPE & POLE FORKS	38
EXTENDABLE MATERIAL HANDLING ARMS	38
RAKES	38

SNOW

HYDRAULIC ANGLE SNOW BLADES	40
U/V ANGLE BLADES	40
SNOW PUSH	41
ICE SCARIFIER	41
V-PLOWS	41

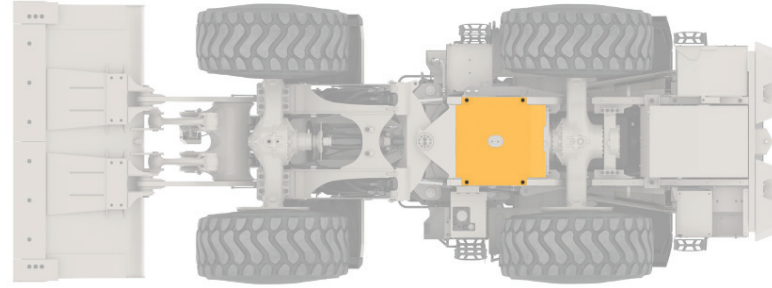
UPGRADE AND ENHANCEMENT KITS

Cat® attachments are designed and tested on each model to maximize machine performance. MWL offers a wide range of upgrade kits that allow Dealers to reconfigure machines for the application that the machine will be working in.

GUARDING »

POWERTRAIN GUARD

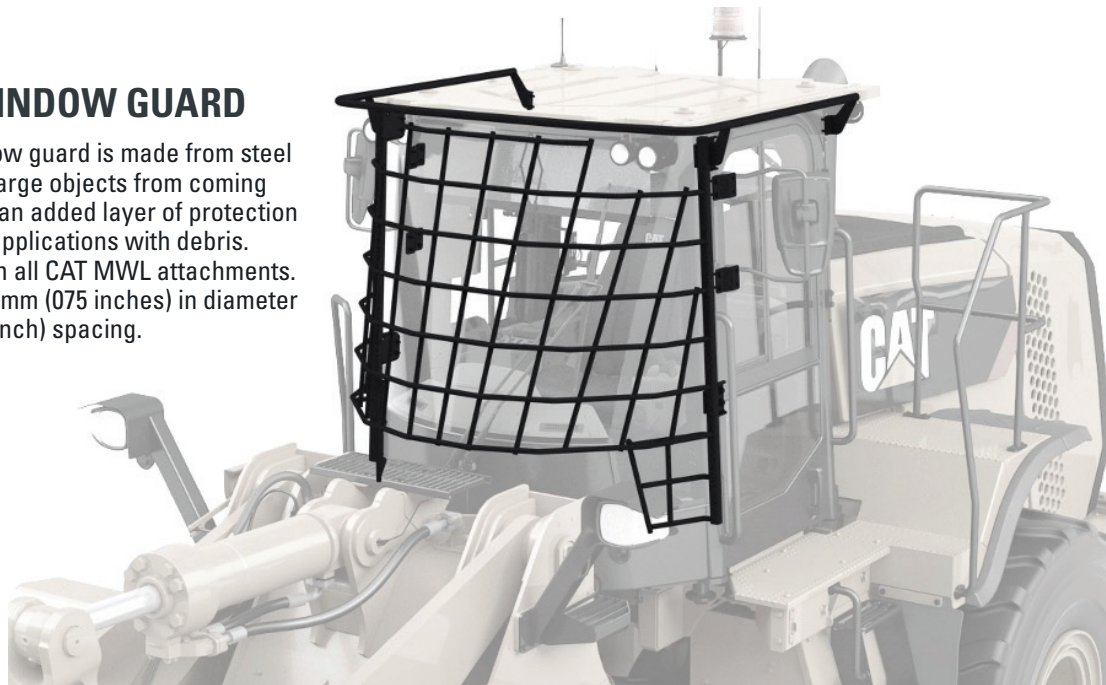
Provides a bolted guard below the transmission for protection. This guard does not negatively impact ground clearance and it is equipped with removable access covers to ease serviceability.



POWERTRAIN GUARD			
MODEL	BUILD	PART NUMBER	ESTIMATED INSTALL TIME
950 / 962	14A	621-7617	1 Hour
966 / 966XE / 972 / 972XE	14A	608-9881	
980 / 980XE / 982 / 982XE	14A	601-0257	

FRONT WINDOW GUARD

The front window guard is made from steel bars that stop large objects from coming into cabin. It is an added layer of protection for working in applications with debris. Compatible with all CAT MWL attachments. The bars are 20mm (0.75 inches) in diameter with 200mm (8 inch) spacing.



FRONT WINDOW GUARD			
MODEL	BUILD	PART NUMBER	ESTIMATED INSTALL TIME
950 / 962 / 966 / 966XE / 972 / 972XE / 980 / 980XE / 982 / 982XE	14A	601-0251	2-3 Hours

ROADING FENDERS

This fender KIT increases tire coverage to protect machine from mud and debris coming off the tires. Includes non-metallic front fender top extensions, front fender mud flaps, access ladder mud flaps, access platform deflectors, full coverage non-metallic rear fenders, and removable mudflaps.



ROADING FENDERS			
MODEL	BUILD	PART NUMBER	ESTIMATED INSTALL TIME
950 / 962	14A	621-7616	2 Hours
966 / 966XE / 972 / 972XE	14A	608-9880	
980 / 980XE	14A	601-0260	
982 / 982XE	14A	601-0261	

MAINTENANCE IMPROVEMENT »

AUTOLUBE

The optional Cat® Auto Lube System provides precise, automatic lubrication of pins and bushings while the machine is in operation. Automatic lubrication reduces time spent on daily maintenance and downtime for unplanned repairs due to insufficient greasing. This helps to increase productivity while driving down owning and operating costs.

The system features integrated monitoring and diagnostics. Machines (950/962/966/972) that are not autolube ready will need an additional hardware kit.



AUTOLUBE			
MODEL	BUILD	PART NUMBER	ESTIMATED INSTALL TIME
950	14A	621-7614	Recommended Dealer Install
962	14A	621-7615	
966 / 966XE	14A	608-9886	
972 / 972XE	14A	608-9887	
980 / 980XE / 982 / 982XE	14A	601-0262	

AUTOLUBE HARDWARE			
MODEL	BUILD	PART NUMBER	ESTIMATED INSTALL TIME
950 / 962	14A	621-7613	Recommended Dealer Install
966 / 966XE / 972 / 972XE	14A	608-9883	

AUTOLUBE RESERVOIR

This kit provides an 8kg grease reservoir which is twice the size of the standard grease reservoir.

AUTOLUBE RESERVOIR			
MODEL	BUILD	PART NUMBER	ESTIMATED INSTALL TIME
950 / 962 / 966 / 966XE / 972 / 972XE / 980 / 980XE / 982 / 982XE	14A	562-0145	1 Hour

AXLE OIL COOLER

Provides lower axle oil temperatures in high braking applications. Machines (950/962/966/972) that are not axle oil cooler ready will need an additional hardware kit.

AXLE OIL COOLER			
MODEL	BUILD	PART NUMBER	ESTIMATED INSTALL TIME
950 / 962	14A	621-7611	Recommended Dealer Install
966 / 966XE / 972 / 972XE	14A	608-9878	
980 / 980XE / 982 / 982XE	14A	601-0258	

AXLE OIL COOLER HARDWARE			
MODEL	BUILD	PART NUMBER	ESTIMATED INSTALL TIME
950 / 962	14A	621-7622	Recommended Dealer Install
966 / 966XE / 972 / 972XE	14A	608-9888	



PERFORMANCE & PRODUCTIVITY »

HYDRAULICS (3V)

3rd valve hydraulics available to control worktools that require an additional function. Machines (950/962/966/972) that are not 3rd valve hydraulic ready will need an additional hardware kit.



HYDRAULICS (3V)			
MODEL	BUILD	PART NUMBER	ESTIMATED INSTALL TIME
950	14A	621-7619	Recommended Dealer Install
962	14A	621-7620	
966 / 966XE	14A	608-9890	
972 / 972XE	14A	608-9891	
980 / 980XE / 982 / 982XE	14A	601-0253	

HYDRAULIC CONTROLS (3V LEVER)

Provides 3 single access control levers for implement controls.

HYDRAULIC CONTROLS (3V LEVER)			
MODEL	BUILD	PART NUMBER	ESTIMATED INSTALL TIME
950 / 962 / 966 / 966XE / 972 / 972XE / 980 / 980XE / 982 / 982XE (JOYSTICK STEERING MACHINES)	14A	597-6698	Recommended Dealer Install
950 / 962 / 966 / 972 / 980 / 982 (STEERING WHEEL MACHINES)	14A	597-6701	

HYDRAULIC CONTROLS (2V JOYSTICK)

Provides 2 function joystick for implement controls

HYDRAULIC CONTROLS (2V JOYSTICK)			
MODEL	BUILD	PART NUMBER	ESTIMATED INSTALL TIME
950 / 962 / 966 / 966XE / 972 / 972XE / 980 / 980XE / 982 / 982XE (JOYSTICK STEERING MACHINES)	14A	597-6699	Recommended Dealer Install
950 / 962 / 966 / 972 / 980 / 982 (STEERING WHEEL MACHINES)	14A	597-6702	

ADVANCED PAYLOAD

Provides the necessary components for expanded machine technology features. Additional payload features available in a dedicated 8in (20cm) display include:

- + Enhanced list management for material tracking
- + Multi-tasking
- + Tip Off Assist
- + Enhanced accuracy from additional sensors and IMU
- + Dispatch for Loading ready (requires additional subscriptions)
- + Software purchase needed for activation (SEA P/N: 513-5975)



ADVANCED PAYLOAD			
MODEL	BUILD	PART NUMBER	ESTIMATED INSTALL TIME
950 / 962 / 966 / 966XE / 972 / 972XE / 980 / 980XE / 982 / 982XE	14A	601-0254	Recommended Dealer Install

VARIABLE PITCH FAN

The variable pitch fan helps to keep rear grill and cooling cores clean in high debris applications. It minimizes the potential for overheating and reduces downtime for radiator clean out. The cooling fan blades rotate to reverse the air flow direction. The reverse air flow purges debris off the cooling cores and rear grill.

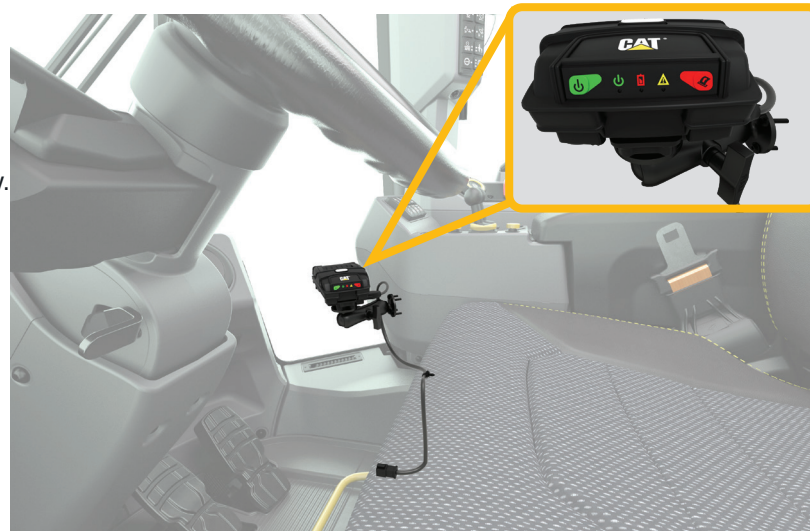


VARIABLE PITCH FAN

MODEL	BUILD	PART NUMBER	ESTIMATED INSTALL TIME
950 / 962	14A	621-7610	Recommended Dealer Install
966 / 972	14A	608-9879	
966XE / 972XE	14A	608-9884	
980 / 980XE / 982 / 982XE	14A	601-0259	

PCS PRINTER

This kit contains the components required to install a Cat® Production Measurement printer for onboard ticket printing capability.



PAYLOAD PRINTER

MODEL	BUILD	PART NUMBER	ESTIMATED INSTALL TIME
950 / 950 GC / 962 / 966 / 966 GC / 966XE / 972 / 972XE / 980 / 980XE / 982 / 982XE	14A / 01B	483-5477	1-2 Hours

SAFETY AND VISIBILITY »

CAMERA (HIGH MOUNT)

Provides a collapsible bracket to increase the height of the machine's existing front view camera. If your machine is not equipped with multi-view, you will need to install the 601-0275 multi-view camera kit.



CAMERA (HIGH MOUNT)

MODEL	BUILD	PART NUMBER	ESTIMATED INSTALL TIME
950 / 962 / 966 / 966XE / 972 / 972XE / 980 / 980XE / 982 / 982XE	14A	601-0267	Recommended Dealer Install

CAMERA (MULTIVIEW)

This kit provides a 8in (20cm) dedicated vision display mounted next to the cab right-hand post with additional front & side cameras to provide a full 360 degree view around the machine. This kit will work with attachment ready machines. Non-attachment ready offerings will need the 601-1014 paper kit. Please see your Cat Dealer for additional details.



CAMERA (MULTIVIEW)

MODEL	BUILD	PART NUMBER	ESTIMATED INSTALL TIME
950 / 962 / 966 / 966XE / 972 / 972XE / 980 / 980XE / 982 / 982XE	14A	601-0275	Recommended Dealer Install

CAMERA DISPLAY (SECONDARY)

To enhance site and operator safety, machine can be equipped with dedicated (always-on) camera display. Full-time secondary display dedicated to the rear-view camera. Can operate in two modes: surround cameras or a dedicated always on rear view camera.

CAMERA (MULTIVIEW)

MODEL	BUILD	PART NUMBER	ESTIMATED INSTALL TIME
950 / 962 / 966 / 966XE / 972 / 972XE / 980 / 980XE / 982 / 982XE	14A	601-0252	Recommended Dealer Install

CAT® OBJECT DETECTION

The CAT Detect is fully integrated into the machine and enhances the operator's view of other machines and objects near the machine. Using both camera and radar systems, it provides audible and visual indications of detected objects.

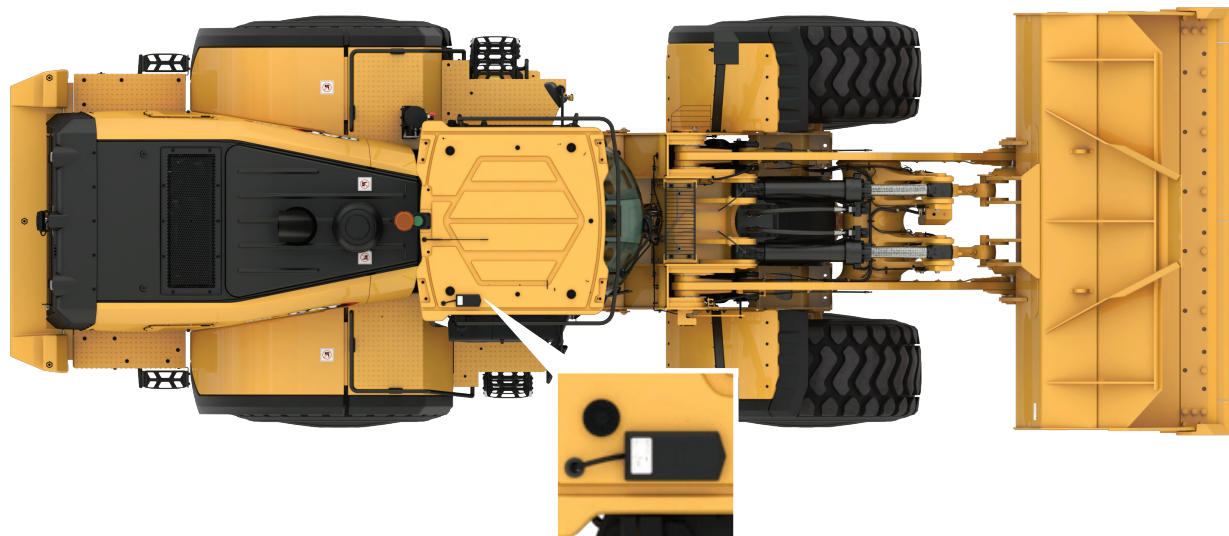


CAT OBJECT DETECTION

MODEL	BUILD	PART NUMBER	ESTIMATED INSTALL TIME
950 / 962 / 966 / 966XE / 972 / 972XE / 980 / 980XE / 982 / 982XE	14A	601-0263	Recommended Dealer Install

PRODUCT LINK™ (DUAL MODE – CELL & SAT)

This kit provides a cellular and satellite product link option for machines that may be working in remote areas.



PRODUCT LINK™ (DUAL MODE – CELL & SAT)

MODEL	BUILD	PART NUMBER	ESTIMATED INSTALL TIME
950 / 962 / 966 / 966XE / 972 / 972XE / 980 / 980XE / 982 / 982XE	14A	600-8286	Recommended Dealer Install

CAB PRECLEANER

Cab Precleaner helps to improve cab filter life and keeps the cab pressurized. Used in high debris applications. Removes approximately 93% of dust particles before air reaches primary air filter. It is shipped with a MERV 16 rated filter.



ADVANCED CABIN PRECLEANER

MODEL	BUILD	PART NUMBER	ESTIMATED INSTALL TIME
950 / 962 / 966 / 966XE / 972 / 972XE / 980 / 980XE / 982 / 982XE	14A	509-8401	Recommended Dealer Install

OPTIONAL ACF FILTERS

PART NUMBER	FILTRATION LEVEL	INITIAL MINIMUM PARTICULATE EFFICIENCY	TYPICAL APPLICATION	DESCRIPTION
593-1532	MERV 16/ F9	≥95% at particulate size 0.3 to 1.0 µm	General Use (dust, silica, mold, diesel particulate matter, etc.)	Offers high-efficiency filtration of respirable particulate. Meets US NIOSH-recommended minimum level of filtration for operator enclosures. Reduces operator exposure to harmful contaminants that affect health, safety, and performance.
593-1534	HEPA/ H134	≥99.95% at minimum penetrating particle size (MPPS) 0.1 µm to 0.3 µm	Finer Dust (asbestos, smoke, regulated contaminants)	All the features of MERV 16/F9, plus: Offers higher-efficiency filtration of finer dust. Meets H13 rating (required in EU, AUS, etc.) and other application-specific HEPA regulations.
472-7939	Activated Carbon + HEPA4	≥99.95% at minimum penetrating particle size (MPPS) 0.1 µm to 0.3 µm	Odor Reduction ⁵ (waste, diesel fumes) Finer Dust	All the features of HEPA/H13, plus: Delivers odor reduction with carbon-based filtration. Ideal for landfills and transfer stations.

PRECLEANER - PRESSURE MONITOR

Interior cab pressure monitoring system with a working range of 0-200 Pascal.



EXTINGUISHER MOUNT

MODEL	BUILD	PART NUMBER	ESTIMATED INSTALL TIME
950 / 962 / 966 / 966XE / 972 / 972XE / 980 / 980XE / 982 / 982XE	14A	490-5636	Recommended Dealer Install

LIGHTS (LED)

High powered LED lights help to provide great visibility.



LIGHTS (1,000 LUMEN LED)

MODEL	BUILD	PART NUMBER	ESTIMATED INSTALL TIME
950 / 962 / 966 / 966XE / 972 / 972XE / 980 / 980XE / 982 / 982XE	14A	589-0437	< Hour
950GC / 966GC	01B	589-0460	< Hour

LIGHTS (1,500 LUMEN LED)

MODEL	BUILD	PART NUMBER	ESTIMATED INSTALL TIME
950 / 962 / 966 / 966XE / 972 / 972XE / 980 / 980XE / 982 / 982XE	14A	589-0452	< Hour
950GC / 966GC	01B	589-0468	< Hour

LIGHTS (REVERSING STROBES)

White LED strobing lights that come on to warn others present when the machine is in reverse.

LIGHTS (REVERSING STROBES)

MODEL	BUILD	PART NUMBER	ESTIMATED INSTALL TIME
950 / 962 / 966 / 966XE / 972 / 972XE / 980 / 980XE / 982 / 982XE	14A	601-0276	1-2 Hours

LIGHTS (SERVICE AND ACCESS LIGHTING)

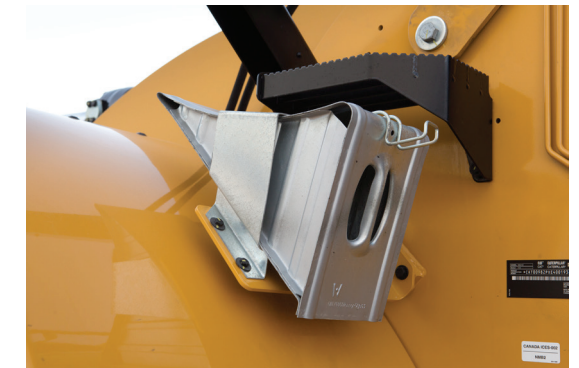
The service lighting is positioned at common service areas enabling service at night and the access lighting illuminates the cab entry path. The service light includes a 30-minute auto shut off feature.

LIGHTS (SERVICE AND ACCESS LIGHTING)

MODEL	BUILD	PART NUMBER	ESTIMATED INSTALL TIME
950 / 962 / 966 / 966XE / 972 / 972XE / 980 / 980XE / 982 / 982XE	14A	601-0264	4-6 Hours

WHEEL CHOCKS

This kit provides wheel chocks used to prevent accidental machine movement. Wheel chocks are mounted to the front frame near front fender making them highly visible and readily accessible.



WHEEL CHOCKS

MODEL	BUILD	PART NUMBER	ESTIMATED INSTALL TIME
950 / 962 / 966 / 966XE / 972 / 972XE / 980 / 980XE / 982 / 982XE	14A	490-5648	1-2 Hours

EXTINGUISHER MOUNT

Provides mount for 4.5 kg (10 lb) fire extinguisher.



EXTINGUISHER MOUNT

MODEL	BUILD	PART NUMBER	ESTIMATED INSTALL TIME
950 / 962 / 966 / 966XE / 972 / 972XE / 980 / 980XE / 982 / 982XE	14A	506-0790	1 Hour

WORKTOOLS

DO MORE JOBS

VERSATILE ATTACHMENTS AND COUPLERS

For worksites that demand more, you need a wheel loader that is purpose-built for the job. Cat® work tools are engineered to handle all of your specific application needs.

LINKAGE COMPATIBILITY »

With the removal of the series letter from the machine model denomination comes a challenge to make sure buckets are compatible with multiple linkages and quick coupler systems we offer in our product line. The objective of the matrix below is to help dealers and customers associate the right bucket to the linkage on the carrier machine in order to achieve best performance and avoid physical interference between bucket and machine parts.



MEDIUM WHEEL LOADER COMPATIBILITY MATRIX							
LINKAGE	MWL MODEL AND SERIES / BUILD NUMBER						
A	950GC	–	–	–	–	–	–
C (Z-Bar)	950G 962G	950H 962H	950L 950Mz 962L 962Mz	950-14A	–	–	–
E (PZ-bar)	950K 962K	950M 962M	Next Gen 950-14A 962-14A	–	–	–	–
H	966GC	966G	966H	966K	966L	966M	NextGen 966-14A
J	972G	972H	972K	972M	972M	NextGen 972-14A	–
N	980G	980H	980K	980M	980M	980GC	NextGen 980-14A
P	982M	NextGen 982-14A	–	–	–	–	–

COUPLERS »

Patented Wheel Loader interface provides coupler flexibility with performance virtually identical to pin-on. Advanced wedging mechanism creates a tight, rattle-free fit. This patented lock up system eliminates play and wear, resulting in a long service life. A new, open coupler frame design opens sight lines from the operator's seat, making it easier than ever before to engage and disengage attachments with certainty.



QUICK COUPLER (FUSION)

PART NUMBER	SALES MODEL	LINKAGE IDENTIFIER	WEIGHT LBS (KG)
617-6371	950 / 950GC / 962	A / C	1090 (494)
617-6372	950 / 962	E	1248 (566)
617-6383	966 / 966GC / 972	H / J	1133 (514)
617-6384	980	N (Standard Lift)	1802 (817)
617-6385	980	N (High Lift)	1811 (821)
617-6386	982	P	2125 (964)

COUPLER HOOKS (FUSION)

PART NUMBER	SALES MODEL	DESCRIPTION	WEIGHT LBS (KG)
317-5562	950 / 950GC / 962 / 966 / 966XE / 972 / 972XE	Blank Hook	787 (357)
315-6309	950 / 950GC / 962 / 966 / 966XE / 972 / 972XE	Flat Back Hook	740 (336)
603-6745	980 / 980XE / 982 / 982XE	Blank Hook	336 (152)
611-6944	980 / 980XE / 982 / 982XE	Flat Back Hook	336 (152)

BUCKETS »

Cat® buckets are more than accessories, they are designed as extensions of your Cat Loader. Every model is matched to specific Cat machines, giving you the better fill, reduced fuel burn, and increased payloads. We built them to make you more productive in whatever task you need to do. Not all attachments are available in all regions. Consult your Cat dealer for specific configurations available in your region.



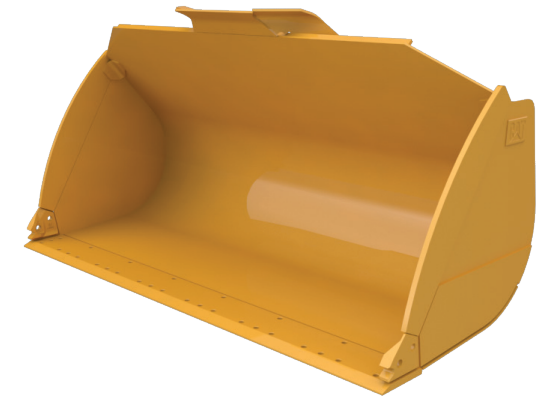
BUCKET TABLE

TITLE	DESCRIPTION
INTERFACE	Pin-On: No coupler solution, maximum usage of machine lifting capabilities in the application. Often used when machine is 100% dedicated to the task at hand. Fusion: The Caterpillar patented Fusion coupler sits back close to the loader arms, minimizing offset, enabling increased machine performance. Optimal visibility in combination with the machine linkage makes it easier and safer to engage and disengage attachments. The Advanced wedge mechanism creates a tight, rattle-free fit, eliminating play and wear resulting in a long service life. Attachment exchangeability among a wide Cat loader range.
DURABILITY	GC (Level 1 / Value Offering): Moldboard - Structural Steel; Side Plates - Structural Steel; Side Bars - T1 Steel; Liners - None Standard (Level 2 / Standard Centerline): Moldboard - Structural Steel; Side Plates - Structural Steel; Side Bars - AR400; Liners - None Abrasion (Level 3 / Performance Improved Materials): Moldboard - AR400; Side Plates - AR400; Side Bars - AR400; Liners - None Heavy Duty (Level 4 / Rebuildable Added Wear Plates): Moldboard - Structural Steel; Side Plates - Structural Steel; Side Bars - AR400; Liners - AR400 Bottom 1/2 of Moldboard Extreme Duty (Level 5 / High Wear Improved Material & Added Wear Plates): Moldboard - T1 Steel; Side Plates - T1 Steel; Side Bars - AR400; Liners - AR400 Moldboard & Inside Side Plates Light Material (Level 2): Moldboard - Structural Steel; Side Plates - Structural Steel; Side Bars - T1 or AR400; Liners - None
CAPACITY 100%	Capacity of bucket at 100% of ISO rated capacity
CAPACITY 110%	Capacity of bucket at 110% of ISO rated capacity
SALES MODEL	Sales Model: Generic sales model with "GC" and "XE" indicators
LINKAGE IDENTIFIER	Bucket compatibility with machine / linkage
PART NUMBER	Top level (orderable) work tool part number
WIDTH	Overall bucket width
WEIGHT	Overall bucket weight
EDGE TYPE	Base Edge: Bolt-on cutting edge is not included with the bucket Holes are provided for addition of bolt-on cutting edge. BOCE (Bolt-on cutting edge): Bolt-on cutting edge included with bucket.



GENERAL PURPOSE PERFORMANCE SERIES

Performance Series Buckets utilize a system-based approach to balance bucket shape against the machine's linkage, weight, lift and tilt capacities. The result is a bucket optimized for performance and productivity which yields higher fill factors, when compared with other buckets of the same rated capacity – up to 115% (average 110%, depending on material)!



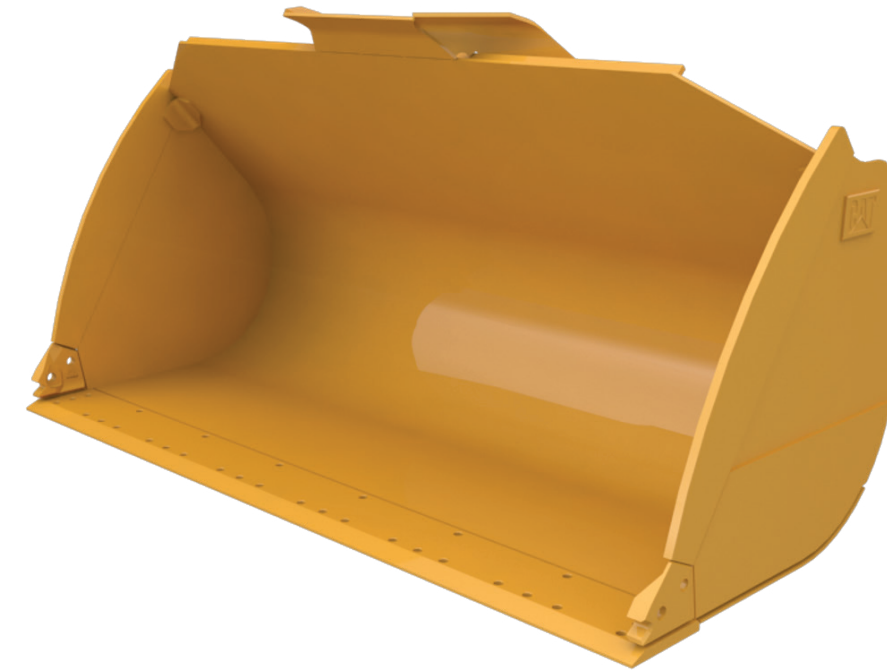
GENERAL PURPOSE BUCKETS															
INTERFACE	DURABILITY	CAPACITY 100%	CAPACITY 110%	SALES MODEL	LINKAGE IDENTIFIER	PART NUMBER	WIDTH	WEIGHT	EDGE TYPE						
		YD3 (M3)	YD3 (M3)				IN (MM)	LB (KG)							
Pin-On	GC	4.00 (3.1)	4.5 (3.4)	950GC	A	559-9419	115 (2927)	3505 (1590)	BOCE						
		4.25 (3.3)	4.75 (3.6)				115 (2927)	3,593 (1630)	BOCE						
	Standard	E	4.00 (3.1)	4.5 (3.4)	950 / 962	E	559-9424	114 (2894)	3516 (1595)	Base Edge					
			4.50 (3.4)	5 (3.7)				115 (2927)	4242 (1924)	BOCE					
			4.75 (3.6)	5.25 (4)				115 (2927)	4323 (1961)	BOCE					
			5.00 (3.8)	5.5 (4.2)				115 (2927)	4429 (2009)	BOCE					
			5.16-1409	6 (4.6)				127 (3220)	5421 (2459)	BOCE					
			6.00 (4.6)	6.5 (5.1)				126 (3201)	4978 (2258)	Base Edge					
		H / J	N	6.25 (4.8)	7 (5.3)	966GC / 966 / 966XE / 972 / 972XE	H / J	363-5197	129 (3267)	5710 (2590)	BOCE				
				7.00 (5.4)	7.75 (5.9)				137 (3481)	6920 (3139)	BOCE				
				7.50 (5.7)	8.25 (6.3)				137 (3481)	7147 (3242)	BOCE				
				7.75 (6)	8.5 (6.6)				137 (3481)	7242 (3285)	BOCE				
				8.25 (6.3)	9 (6.9)				137 (3481)	7302 (3312)	BOCE				
				8.25 (6.4)	9 (7)				142 (3602)	8713 (3952)	BOCE				
			P	E	5.00 (3.8)	5.5 (4.2)	950 / 962	E	516-1499	118 (2994)	4610 (2091)	BOCE			
					5.25 (4)	5.75 (4.4)				118 (2994)	4727 (2144)	BOCE			
					5.50 (4.2)	6 (4.6)				118 (2994)	4828 (2190)	BOCE			
					6.75 (5.1)	7.5 (5.6)				966 / 966XE / 972 / 972XE	H / J	416-6339	132 (3357)	6149 (2789)	BOCE
					7.75 (6)	8.5 (6.6)				980 / 980XE	N	518-6144	137 (3481)	7368 (3342)	BOCE
					9.25 (7)	10.25 (7.7)				980 / 980XE	N	518-6135	142 (3611)	9147 (4149)	BOCE
	Abrasion	P	9.75 (7.5)	10.75 (8.3)	982 / 982XE	P	416-6463	140 (3568)	8433 (3825)	Base Edge					
			10.75 (8.2)	11.75 (9)				140 (3568)	8843 (4011)	Base Edge					
			7.50 (5.7)	8.25 (6.3)				980 / 980XE	N	518-8291	137 (3481)	9107 (4131)	BOCE		
			9.25 (7)	10.25 (7.7)				982 / 982XE	P	518-6127	143 (3633)	10897 (4943)	BOCE		
9.75 (7.5)			10.75 (8.3)	982 / 982XE				P	396-4829	142 (3608)	9771 (4432)	Base Edge			
Fusion			Standard	4.00 (3.1)				4.5 (3.4)	950GC / 950 / 962	A / C	559-9421	115 (2927)	1728 (784)	BOCE	
		4.00 (3.1)		4.5 (3.4)	950 / 962	E	516-3431	115 (2927)				3794 (1721)	BOCE		
		4.50 (3.4)		5 (3.7)	950GC / 950 / 962	A / C	382-9835	114 (2894)	3552 (1611)	Base Edge					
		4.50 (3.4)		5 (3.7)				950 / 962	E	516-1417	115 (2927)	3948 (1791)	BOCE		
		4.75 (3.6)		5.25 (4)	966GC / 966 / 966XE / 972 / 972XE	H / J	363-5198	115 (2927)	4023 (1825)	BOCE					
		5.00 (3.8)		5.5 (4.2)				115 (2927)	4123 (1870)	BOCE					
		5.50 (4.2)		6 (4.6)				127 (3220)	5055 (2293)	BOCE					
	5.75 (4.4)	6.25 (4.8)		126 (3201)				4535 (2057)	Base Edge						
	6.00 (4.6)	6.5 (5.1)		126 (3201)				4700 (2132)	Base Edge						
	6.00 (4.6)	6.5 (5.1)		126 (3201)				4665 (2116)	Base Edge						
	6.25 (4.8)	7 (5.3)		126 (3201)	4652 (2110)	Base Edge									
	6.50 (5)	7.25 (5.5)		980 / 980XE	N	448-9326	126 (3201)	4852 (2201)	Base Edge						
	7.00 (5.4)	7.75 (5.9)	134 (3413)				5730 (2599)	Base Edge							
	7.50 (5.7)	8.25 (6.3)	137 (3481)				6861 (3112)	BOCE							
	7.75 (6)	8.5 (6.6)	140 (3568)				6704 (3041)	Base Edge							
	8.75 (6.7)	9.75 (7.4)	982 / 982XE				P	598-4170	140 (3568)	7191 (3262)	Base Edge				
	8.75 (6.7)	9.75 (7.4)	982 / 982XE				P	588-3358	143 (6.70)	9821 (4455)	Base Edge				

GET - GENERAL PURPOSE PERFORMANCE SERIES

SALES MODEL	BOCE		CORNER PROTECTORS	BOLT-ON ADAPTERS	BOLT-ON SEGMENTS	
	STANDARD	HD			STANDARD	HD
950/962	139-9229 (30mm)	132-1052 (30mm HD)	174-7948 Corner Protectors	539-5785 2-Strap (A080)	139-9279 (30mm)	107-3394 (68mm HD)
	(2) 139-9230 Edge-Cutting	(2) 135-9666 Edge-Cutting	(1) 253-0062 Guard-Corner RH	(1) 505-4032 Right	(5) 140-7601 Edge-Segment	(5) 132-4715 Edge-Segment
	(2) 4T-8101 Edge-End	(2) 132-1033 Edge-End	(1) 253-0063 Guard-Corner LH	(1) 505-4033 Left	(2) 263-7545 Edge-Segment	(2) 257-1762 Edge-Segment
	(12) 4F-4042 Bolt-Plow	(12) 4F-4042 Bolt-Plow	(4) 8T-9079 Bolt-Plow	(6) 505-4029 Center	(14) 4F-4042 Bolt-Plow	(14) 4F-4042 Bolt-Plow
	(12) 2J-3507 Nut-Hex	(12) 2J-3507 Nut-Hex	(4) 3K-9770 Nut-Hex	(2) 6V-6535 Plow Bolt	(14) 2J-3507 Nut-Hex	(14) 2J-3507 Nut-Hex
	-	-	-	(2) 6V-8360 Plow Bolt	-	-
	-	-	-	(12) 5P-8136 Plow Bolt	-	-
	-	-	-	(4) 2J-5997 Locknut	-	-
-	-	-	(12) 8J-2933 Nut	-	-	
966/972	100-6669 (30mm)	140-6824 (35mm HD)	174-7949 Corner Protectors	539-5795 2-Strap (A090)	100-6667(30mm)	143-3062 (35mm HD)
	(2) 100-6668 Edge-Cutting	(2) 140-6823 Edge-Cutting	(1) 253-0064 Guard-Corner	(1) 505-4045 Right	(5) 100-6666 Edge-Segment	(5) 140-6870 Edge-Segment Hd
	(2) 3G-6395 Edge-End	(2) 167-7430 Edge End	(1) 253-0065 Guard-Corner	(1) 505-4046 Left	(2) 308-4322 Edge-Segment	(2) 310-4067 Edge-Segment Hd
	(12) 5P-8823 Bolt-Plow	(12) 5P-8823 Bolt-Plow	(4) 6V-6535 Bolt-Plow	(6) 505-4044 Center	(14) 5P-8823 Bolt-Plow	(14) 5P-8823 Bolt-Plow
	(12) 3K-9770 Nut-Hex	(12) 3K-9770 Nut-Hex	(4) 3K-9770 Nut-Hex	(4) 5P-8823 Plow Bolt	(14) 3K-9770 Nut-Hex	(14) 3K-9770 Nut-Hex
	-	-	-	(12) 5P-8361 Plow Bolt	-	-
-	-	-	(4) 2J-5997 Locknut	-	-	
-	-	-	(12)5P-8632 Nut	-	-	
980	109-9213 (35mm)	127-0718 (40mm HD)	174-7950 Corner Protectors	539-5705 2-Strap~ A100)	109-9059 (30mm)	135-9667 (45mm HD)
	(2) 100-9212 Edge-Cutting	(2) 109-9230 Edge-Cutting	(1) 253-0066 Guard-Corner RH	(1) 505-4058 Right	(7) 109-9019 Edge-Segment	(7) 135-8219 Edge-Segment
	(2) 280-4068 Edge-End	(2) 100-4043 Edge End	(1) 253-0067 Guard-Corner LH	(1) 505-4049 Left	(14) 5P-8823 Bolt-Plow	(14) 5P-8823 Bolt-Plow
	(12) 5P-8823 Bolt-Plow	(12) 5P-8823 Bolt-Plow	(4) 5P-8823 Bolt-Plow	(6) 505-4057 Center	(14) 3K-9770 Nut-Hex	(14) 3K-9770 Nut-Hex
	(12) 3K-9770 Nut-Hex	(12) 3K-9770 Nut-Hex	(4) 3K-9770 Nut-Hex	(2) 6V-8360 Plow Bolt	-	-
	-	-	-	(14) 5P-8361 Plow Bolt	9W-0818 (30mm)	-
982	9W-1479 (35mm)	442-8514 (40mm HD)	-	(14) 5P-8361 Plow Bolt	9W-0818 (30mm)	-
	(2) 9W-1375 Edge-Cutting	(2) 238-3198 Edge-Cutting	-	(4) 3K-9770 Nut	(5) 4T-6700 Edge-Segment	-
	(2) 1U-0761 Edge-End	(2) 100-4043 Edge End	-	(12) 5P-8362 Nut (Conical)	(2) 308-4327 Edge-Segment	-
	(12) 5P-8823 Bolt-Plow	(12) 5P-8823 Bolt-Plow	-	-	(14) 5P-8823 Bolt-Plow	-
(12) 3K-9770 Nut-Hex	(12) 3K-9770 Nut-Hex	-	-	(14) 3K-9770 Nut-Hex	-	

FLAT FLOOR BUCKETS

Flat Floor Buckets have a flat floor for efficient loading of stockpiled materials, which require moderate to light breakout forces. These are best performers for production loading.



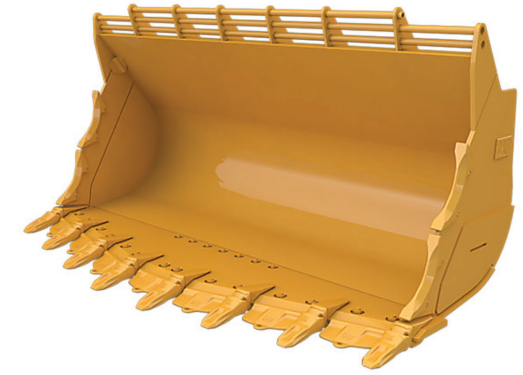
FLAT FLOOR BUCKETS									
INTERFACE	DURABILITY	CAPACITY 100%	CAPACITY 110%	SALES MODEL	LINKAGE IDENTIFIER	PART NUMBER	WIDTH	WEIGHT	EDGE TYPE
		YD3 (M3)	YD3 (M3)				IN (MM)	LB (KG)	
Pin-On	Standard	4.50 (3.4)	5 (3.7)	950 / 962	E	354-4865	114 (2894)	3704 (1680)	Base Edge
		5.00 (3.8)	5.5 (4.2)			354-4867	114 (2894)	3918 (1777)	Base Edge
		5.50 (4.2)	6 (4.6)			368-4583	126 (3201)	4912 (2228)	Base Edge
		5.75 (4.4)	6.25 (4.8)	966 / 966XE / 972 / 972XE	H / J	380-9835	126 (3201)	5009 (2272)	Base Edge
		6.00 (4.6)	6.5 (5.1)			363-5201	126 (3201)	5108 (2317)	Base Edge
		6.00 (4.6)	6.5 (5.1)			516-1817	127 (3220)	5584 (2533)	BOCE
		6.75 (5.2)	7.5 (5.7)	361-4996	126 (3201)	5243 (2378)	Base Edge		
	7.50 (5.7)	8.25 (6.3)	980 / 980XE	N	462-9513	136 (3447)	7176 (3255)	BOCE	
	Heavy Duty	9.25 (7)	10.25 (7.7)	982 / 982XE	P	396-4825	142 (3608)	9956 (4516)	Base Edge
	Fusion	Standard	4.50 (3.4)	5 (3.7)	950 / 962	E	354-4866	114 (2894)	3411 (1547)
5.00 (3.8)			5.5 (4.2)	354-4868			114 (2894)	3523 (1598)	Base Edge
5.75 (4.4)			6.25 (4.8)	966 / 966XE / 972 / 972XE	H / J	380-9837	126 (3201)	4780 (2168)	Base Edge
6.25 (4.8)			7 (5.3)			369-4432	126 (3201)	4987 (2262)	Base Edge
6.75 (5.2)			7.5 (5.7)			361-4997	126 (3201)	5038 (2285)	Base Edge

GET - FLAT FLOOR PERFORMANCE SERIES

SALES MODEL	BOCE		CORNER PROTECTORS	BOLT-ON ADAPTERS	BOLT-ON SEGMENTS	
	STANDARD	HD			STANDARD	HD
950/962	139-9229 (30mm)	132-1052 (30mm HD)	174-7948 Corner Protectors	539-5785 2-Strap (A080)	139-9279 (30mm)	107-3394 (68mm HD)
	(2) 139-9230 Edge-Cutting	(2) 135-9666 Edge-Cutting	(1) 253-0062 Guard-Corner RH	(1) 505-4032 Right	(5) 140-7601 Edge-Segment	(5) 132-4715 Edge-Segment
	(2) 4T-8101 Edge-End	(2) 132-1033 Edge-End	(1) 253-0063 Guard-Corner LH	(1) 505-4033 Left	(2) 263-7545 Edge-Segment	(2) 257-1762 Edge-Segment
	(12) 4F-4042 Bolt-Plow	(12) 4F-4042 Bolt-Plow	(4) 8T-9079 Bolt-Plow	(6) 505-4029 Center	(14) 4F-4042 Bolt-Plow	(14) 4F-4042 Bolt-Plow
	(12) 2J-3507 Nut-Hex	(12) 2J-3507 Nut-Hex	(4) 3K-9770 Nut-Hex	(2) 6V-6535 Plow Bolt	(14) 2J-3507 Nut-Hex	(14) 2J-3507 Nut-Hex
	-	-	-	(2) 6V-8360 Plow Bolt	-	-
	-	-	-	(12) 5P-8136 Plow Bolt	-	-
-	-	-	(4) 2J-5997 Locknut	-	-	
-	-	-	(12) 8J-2933 Nut	-	-	
966/972	100-6669 (30mm)	140-6824 (35mm HD)	174-7949 Corner Protectors	539-5795 2-Strap (A090)	100-6667 (30mm)	143-3062 (35mm HD)
	(2) 100-6668 Edge-Cutting	(2) 140-6823 Edge-Cutting	(1) 253-0064 Guard-Corner	(1) 505-4045 Right	(5) 100-6666 Edge-Segment	(5) 140-6870 Edge-Segment Hd
	(2) 3G-6395 Edge-End	(2) 167-7430 Edge End	(1) 253-0065 Guard-Corner	(1) 505-4046 Left	(2) 308-4322 Edge-Segment	(2) 310-4067 Edge-Segment(Hd)
	(12) 5P-8823 Bolt-Plow	(12) 5P-8823 Bolt-Plow	(4) 6V-6535 Bolt-Plow	(6) 505-4044 Center	(14) 5P-8823 Bolt-Plow	(14) 5P-8823 Bolt-Plow
	(12) 3K-9770 Nut-Hex	(12) 3K-9770 Nut-Hex	(4) 3K-9770 Nut-Hex	(4) 5P-8823 Plow Bolt	(14) 3K-9770 Nut-Hex	(14) 3K-9770 Nut-Hex
	-	-	-	(12) 5P-8361 Plow Bolt	-	-
	-	-	-	(4) 2J-5997 Locknut	-	-
-	-	-	(12)5P-8632 Nut	-	-	
980	109-9213 (35mm)	127-0718 (40mm HD)	174-7950 Corner Protectors	539-5705 2-Strap (A100)	109-9059 (30mm)	135-9667 (45mm HD)
	(2) 100-9212 Edge-Cutting	(2) 109-9230 Edge-Cutting	(1) 253-0066 Guard-Corner RH	(1) 505-4058 Right	(7) 109-9019 Edge-Segment	(7) 135-8219 Edge-Segment
	(2) 280-4068 Edge-End	(2) 100-4043 Edge End	(1) 253-0067 Guard-Corner LH	(1) 505-4049 Left	(14) 5P-8823 Bolt-Plow	(14) 5P-8823 Bolt-Plow
	(12) 5P-8823 Bolt-Plow	(12) 5P-8823 Bolt-Plow	(4) 5P-8823 Bolt-Plow	(6) 505-4057 Center	(14) 3K-9770 Nut-Hex	(14) 3K-9770 Nut-Hex
(12) 3K-9770 Nut-Hex	(12) 3K-9770 Nut-Hex	(4) 3K-9770 Nut-Hex	(2) 6V-8360 Plow Bolt	-	-	
982	9W-1479 (35mm)	442-8514 (40mm HD)	-	(14) 5P-8361 Plow Bolt	9W-0818 (30mm)	-
	(2) 9W-1375 Edge-Cutting	(2) 238-3198 Edge-Cutting	-	(4) 3K-9770 Nut	(5) 4T-6700 Edge-Segment	-
	(2) 1U-0761 Edge-End	(2) 100-4043 Edge End	-	(12) 5P-8362 Nut (Conical)	(2) 308-4327 Edge-Segment	-
	(12) 5P-8823 Bolt-Plow	(12) 5P-8823 Bolt-Plow	-	-	(14) 5P-8823 Bolt-Plow	-
(12) 3K-9770 Nut-Hex	(12) 3K-9770 Nut-Hex	-	-	(14) 3K-9770 Nut-Hex	-	

ROCK PERFORMANCE SERIES

Rock Buckets offer the same “loads easy, carries more” efficiency of the General Purpose Bucket, and add wear material for handling more abrasive material. It balances the need for high production in abrasive applications.



ROCK BUCKETS

INTERFACE	DURABILITY	CAPACITY 100%	CAPACITY 110%	SALES MODEL	LINKAGE IDENTIFIER	PART NUMBER	WIDTH	WEIGHT	EDGE TYPE
		YD3 (M3)	YD3 (M3)				IN (MM)	LB (KG)	
Pin-On	Standard	4.50 (3.4)	5 (3.7)	966 / 966XE / 972 / 972XE	H / J	554-0034	128 (3252)	5022 (2278)	Base Edge
		5.20 (4)	5.75 (4.4)			539-0402	128 (3255)	5487 (2489)	Base Edge
		5.25 (4)	5.75 (4.4)			545-8873	128 (3252)	5101 (2314)	Base Edge
	Abrasion	5.75 (4.4)	6.25 (4.8)	980 / 980XE	N	539-0406	139 (3521)	6340 (2876)	Base Edge
		7.00 (5.4)	7.75 (5.9)	980 / 980XE	N	554-0044	139 (3518)	7769 (3524)	Base Edge
		7.00 (5.4)	7.75 (5.9)	982 / 982XE	P	594-9313	143 (3644)	8,845 (4012)	Base Edge
		Extreme Duty	6.00 (4.5)	6.5 (5)	980 / 980XE	N	595-0550	137 (3480)	8186 (3713)
7.00 (5.4)	7.75 (5.9)		982 / 982XE	P	559-8096	143 (3644)	10390 (4713)	TIPS / 8	
7.00 (5.4)	7.75 (5.9)				539-0404	144 (3647)	9967 (4521)	Base Edge	
7.50 (5.8)	8.25 (6.4)	557-9587			143 (3644)	10223 (4637)	Base Edge		
Fusion	Standard	4.50 (3.4)	5 (3.7)	966 / 966XE / 972 / 972XE	H / J	554-0036	128 (3252)	4716 (2139)	Base Edge
	Heavy Duty	6.50 (5)	7.25 (5.5)	982 / 982XE	P	587-0452	144 (3647)	8920 (4046)	Base Edge

GET - ROCK PERFORMANCE SERIES

SALES MODEL	BOLT-ON SEGMENTS		SIDEBAR PROTECTORS	
	STANDARD	HD	STANDARD	HD
966/972	135-9293 (40mm)	135-9543 (Half Arrow)	135-8245 Sidebar Protectors	
	(1) 135-9294 Edge-Segment	(1) 135-9544 Edge-Segment	(2) 135-8246 Protector-Sdbar	
	(3) 135-9295 Edge-Segment	(3) 135-9545 Edge-Segment(RH)	(4) 135-9292 Pin-Get	
	(3) 135-9296 Edge-Segment	(3) 135-9546 Edge-Segment(LH)	(4) 114-0359 Retainer As-Get	
	(14) 8T-9079 Bolt-Plow	(14) 6V-6535 Bolt-Plow		
(14) 3K-9770 Nut-Hex	(14) 3K-9770 Nut-Hex			
980/983	119-3230 (35mm)	109-3123 (Half Arrow)	106-0912 Sidebar Protectors	
	(1) 9W-5734 Edge-Segment	(1) 116-7460 Edge-Segment	(2) 135-8246 Protector-Sdbar	
	(3) 9W-5737 Edge-Segment-RH	(3) 116-7461 Edge-Segment	(4) 135-9292 Pin-GET	
	(3) 9W-5730 Edge-Segment-LH	(3) 116-7462 Edge-Segment	(4) 114-0359 Retainer AS-GET	
	(21) 8T-9079 Bolt-Plow	(21) 6V-6535 Bolt-Plow		
(21) 3K-9770 Nut-Hex	(21) 3K-9770 Nut-Hex			

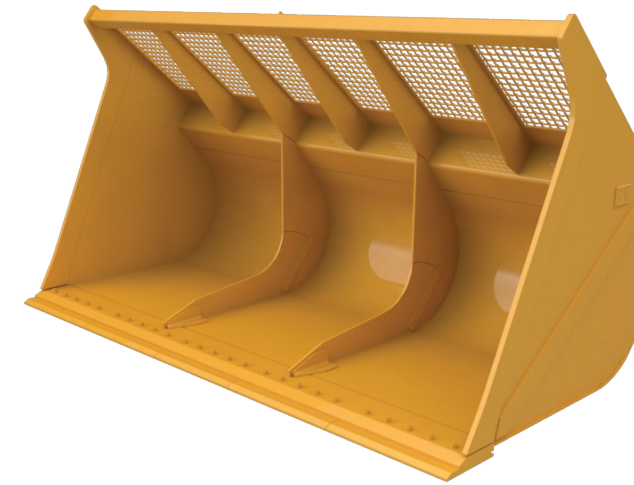
HIGH DUMP BUCKETS

High Dump Buckets utilize dedicated dumping cylinders and a bottom hinge to “roll out” material. This bucket reaches up and over the sides of loading bins and truck sides, higher than ordinary bucket types. Sized for less dense material, they are ideal for transfer stations or loading high-sided trucks.



WOODCHIP BUCKETS

Woodchip (WC) Buckets are optimized for moving large volumes of wood chips. The flat floor and straight edge work to scoop the bucket full and help heap the load high.



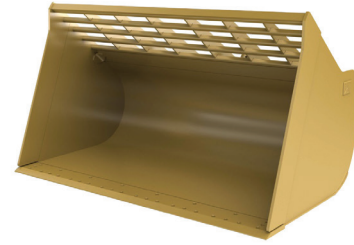
HIGH DUMP BUCKETS									
INTERFACE	DURABILITY	CAPACITY 100%	CAPACITY 110%	SALES MODEL	LINKAGE IDENTIFIER	PART NUMBER	WIDTH	WEIGHT	EDGE TYPE
		YD3 (M3)	YD3 (M3)				IN (MM)	LB (KG)	
Pin-On	Standard	8.0 (6.1)	8.75 (6.7)	950 / 962	E	622-6052	120 (3037)	6617 (3001)	BOCE
		10.0 (7.6)	11 (8.4)			622-6060	132 (3350)	7129 (3234)	BOCE
		10.0 (7.6)	11 (8.4)	966GC / 966 / 966XE / 972 / 972XE	H / J	622-6105	132 (3350)	17456 (7918)	BOCE
		12.0 (9.2)	13.25 (10.1)	950 / 962	E	622-6062	132 (3350)	7504 (3404)	BOCE
		12.0 (9.2)	13.25 (10.1)	966GC / 966 / 966XE / 972 / 972XE	H / J	622-6107	144 (3656)	8388 (3805)	BOCE
		14.5 (11.1)	16 (12.2)	622-6111		144 (3656)	8843 (4011)	BOCE	
Fusion	Standard	8.0 (6.1)	8.75 (6.7)	950 / 962	E	622-6029	120 (3037)	6624 (3005)	BOCE
		10.0 (7.6)	11 (8.4)			622-6031	132 (3350)	7131 (3235)	BOCE
		10.0 (7.6)	11 (8.4)	966GC / 966 / 966XE / 972 / 972XE	H / J	622-6088	132 (3350)	7735 (3509)	BOCE
		12.0 (9.2)	13.25 (10.1)	950 / 962	E	622-6033	132 (3350)	7510 (3406)	BOCE
		12.0 (9.2)	13.25 (10.1)	966GC / 966 / 966XE / 972 / 972XE	H / J	622-6090	144 (3656)	8205 (3722)	BOCE
		14.5 (11.1)	16 (12.2)	622-6093		144 (3656)	8660 (3928)	BOCE	

HIGH DUMP BUCKETS - HEAVY DUTY									
INTERFACE	DURABILITY	CAPACITY 100%	CAPACITY 110%	SALES MODEL	LINKAGE IDENTIFIER	PART NUMBER	WIDTH	WEIGHT	GET / QTY
		YD3 (M3)	YD3 (M3)				IN (MM)	LB (KG)	
Fusion	Standard	7.0 (5.4)	7.75 (5.9)	966GC / 966 / 966XE / 972 / 972XE	H / J	622-6081	120 (3059)	6310 (2862)	BOCE
		8.0 (6.1)	8.75 (6.7)	950 / 962	E	622-6027	115 (2921)	6139 (2785)	BOCE

HIGH CAPACITY / WOOD CHIP BUCKETS											
INTERFACE	DURABILITY	CAPACITY 100%	CAPACITY 110%	SALES MODEL	LINKAGE IDENTIFIER	PART NUMBER	WIDTH	WEIGHT	EDGE TYPE		
		YD3 (M3)	YD3 (M3)				IN (MM)	LB (KG)			
Pin-On	Standard	12.00 (9.2)	13.25 (10.1)	950 / 962	E	354-4873	131 (3330)	5401 (2450)	BOCE		
		13.00 (9.9)	14.25 (10.9)			354-4875	131 (3330)	5600 (2540)	BOCE		
		15.0 (11.5)	16.5 (12.7)	980 / 980XE	N	195-2643	164 (4166)	8792 (3988)	BOCE		
		15.50 (11.9)	17 (13.1)	966GC / 966 / 966XE / 972 / 972XE	H / J	553-9645	155 (3943)	7061 (3203)	BOCE		
		15.75 (12)	17.25 (13.2)	982 / 982XE	P	416-6476	164 (4174)	10318 (4680)	BOCE		
		18.25 (14)	20 (15.4)	966GC / 966 / 966XE / 972 / 972XE	H / J	600-8400	155 (3937)	7604 (3449)	Base Edge		
		19.00 (14.5)	21 (16)	980 / 980XE	N	614-5150	175 (4433)	10582 (4800)	BOCE		
		22.50 (17.2)	24.75 (18.9)	982 / 982XE	P	553-9657	175 (4433)	11971 (5430)	BOCE		
		Fusion	Standard	12.00 (9.2)	13.25 (10.1)	950 / 962	E	354-4874	131 (3330)	5227 (2371)	BOCE
				13.00 (9.9)	14.25 (10.9)			354-4876	131 (3330)	5437 (2466)	BOCE
15.50 (11.9)	17 (13.1)			966GC / 966 / 966XE / 972 / 972XE	H / J	553-9647	155 (3943)	6949 (3152)	BOCE		
18.25 (14)	20 (15.4)			614-5149		155 (3943)	7341 (3330)	BOCE			
19.00 (14.5)	21 (16)			980 / 980XE	N	553-9655	175 (4433)	9652 (4378)	BOCE		
22.00 (16.8)	24.25 (18.5)			982 / 982XE	P	598-4174	175 (4433)	11248 (5102)	Base Edge		

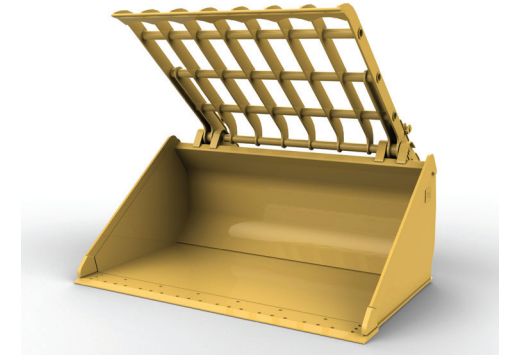
WASTE LOAD & CARRY BUCKETS

Waste Load & Carry Buckets are an all around good solution for moving waste in a transfer station or recycling center. Primarily designed to load & carry light weight material minimizing contact with the floor for less bucket and floor wear. Buckets are also versatile enough to allow for dozing material, stockpiling and load compaction.



WASTE TAMP & CLAMP BUCKETS

Waste Tamp & Clamp Buckets are designed for applications that require picking, sorting, material redistribution, and tamping loads in trucks.



WASTE LOAD & CARRY BUCKETS									
INTERFACE	DURABILITY	CAPACITY 100%	CAPACITY 110%	SALES MODEL	LINKAGE IDENTIFIER	PART NUMBER	WIDTH	WEIGHT	EDGE TYPE
		YD3 (M3)	YD3 (M3)				IN (MM)	LB (KG)	
Pin-On	Standard	8.00 (6.1)	8.75 (6.7)	950 / 962	E	516-2903	119 (3032)	5900 (2676)	Rubber BOCE
		8.00 (6.1)	8.75 (6.7)				516-2981	120 (3059)	5895 (2674)
		9.75 (7.5)	10.75 (8.3)	966GC / 966 / 966XE / 972 / 972XE	H / J	516-2145	131 (3323)	7242 (3285)	Rubber BOCE
		9.75 (7.5)	10.75 (8.3)				516-2103	132 (3357)	7513 (3408)
		14.00 (10.7)	15.5 (11.8)	980 / 980XE	N	516-1803	150 (3810)	9744 (4420)	Rubber BOCE
		14.00 (10.7)	15.5 (11.8)				516-1756	153 (3882)	10029 (4549)

WASTE TAMP & CLAMP BUCKETS									
INTERFACE	DURABILITY	CAPACITY 100%	CAPACITY 110%	SALES MODEL	LINKAGE IDENTIFIER	PART NUMBER	WIDTH	WEIGHT	EDGE TYPE
		YD3 (M3)	YD3 (M3)				IN (MM)	LB (KG)	
Pin-On	Standard	5.75 (4.4)	6.25 (4.8)	950 / 962	E	624-9377	121 (3059)	7549 (3424)	Base Edge
		6.5 (5)	7.25 (5.5)	966GC / 966 / 966XE / 972 / 972XE	H / J	624-9380	132 (3357)	8613 (3907)	Base Edge

WASTE -DOZING BUCKETS

Waste dozing buckets are designed to push waste loads along the floor to a hole or hopper in the floor for below grade truck loading. Bucket design maximizes volume when pushing waste. Dozing bucket can also be used to push material away from trucks tipping on the floor or stockpiling.



WASTE DOZING BUCKETS									
INTERFACE	DURABILITY	CAPACITY 100%	CAPACITY 110%	SALES MODEL	LINKAGE IDENTIFIER	PART NUMBER	WIDTH	WEIGHT	EDGE TYPE
		YD3 (M3)	YD3 (M3)				IN (MM)	LB (KG)	
Pin-On	Standard	6.75 (5.2)	7.5 (5.7)	950 / 962	E	516-3013	119 (3032)	5146 (2334)	Rubber BOCE
		6.75 (5.2)	7.5 (5.7)				516-3001	120 (3059)	5139 (2331)
		8.50 (6.5)	9.25 (7.2)	966GC / 966 / 966XE / 972 / 972XE	H / J	516-2101	131 (3323)	6777 (3074)	Rubber BOCE
		8.50 (6.5)	9.25 (7.2)				516-2131	132 (3357)	7048 (3197)
		13.00 (9.9)	14.25 (10.9)	980 / 980XE	N	516-1699	150 (3810)	9228 (4186)	Rubber BOCE
		13.00 (9.9)	14.25 (10.9)				517-2578	153 (3882)	9513 (4315)
		13.25 (10.1)	14.5 (11.1)	982 / 982XE	P	416-6477	153 (3882)	10792 (4895)	Steel BOCE
Fusion	Standard	6.75 (5.2)	7.5 (5.7)	950 / 962	E	519-3516	119 (3032)	4319 (1959)	Base Edge

GET - WASTE		
SALES MODEL	BOCE	
	STANDARD	HD
950/962	309-1062 (30mm Steel)	437-0288 (127mm Rubber)
	(2) 1U-0593 Edge-Cutting	(1) 615-2469 Edge-Cutting
	(2) 3G-6395 Edge-End	(8) 5P-8361 Bolt-Plow
	(12) 5P-8823 Bolt-Plow	(8) 4K-0684 Washer-Hard
	(12) 3K-9770 Nut-Hex	(8) 3K-9770 Nut-Hex
966/972	437-8813 (40mm Steel)	383-9845 (127mm Rubber)
	(2) 100-4047 Edge-Cutting	(1) 615-2477 Edge-Cutting
	(2) 1U-0761 Edge-End	(8) 5P-8361 Bolt-Plow
	(12) 5P-8823 Bolt-Plow	(8) 4K-0684 Washer-Hard
980	(12) 3K-9770 Nut-Hex	(8) 3K-9770 Nut-Hex
	439-0497 (35mm Steel)	437-0206 (127mm Rubber)
	(2) 4T-6589 Edge-Cutting	(1) 615-2470 Edge-Cutting
	(2) 1U-0761 Edge-End	(16) 5P-8136 Bolt-Plow
	(16) 8J-2928 Bolt-Plow	(2) 5P-8823 Bolt-Plow
	(6) 5P-8823 Bolt-Plow	(2) 4K-0684 Washer-Hard
	(16) 2J-3507 Nut-Hex	(16) 2J-3507 Nut-Hex
(6) 3K-9770 Nut-Hex	(2) 3K-9770 Nut-Hex	

COAL BUCKETS

Coal Buckets are high-volume material movers, for loading and stockpiling coal and other materials of similar density.



COAL BUCKETS

INTERFACE	DURABILITY	CAPACITY 100%	CAPACITY 110%	SALES MODEL	LINKAGE IDENTIFIER	PART NUMBER	WIDTH	WEIGHT	EDGE TYPE
		YD3 (M3)	YD3 (M3)				IN (MM)	LB (KG)	
Pin-On	Light Material	9.25 (7.1)	10.25 (7.8)	966 / 966XE / 972 / 972XE	H / J	363-5203	136 (3447)	6314 (2864)	BOCE
		9.5 (7.2)	10.5 (7.9)				361-5002	136 (3447)	7028 (3188)
		11.50 (8.8)	12.75 (9.7)	982 / 982XE	P	416-6478	143 (3638)	9958 (4517)	BOCE
Fusion	Light Material	9.50 (7.2)	10.5 (7.9)	966 / 966XE / 972 / 972XE	H / J	361-5003	136 (3447)	6706 (3042)	BOCE

GET - COAL PERFORMANCE SERIES

SALES MODEL	BOCE	
	STANDARD	HD
966/972	109-9213 (35mm)	127-0718 (40mm HD)
	(2) 100-9212 Edge-Cutting	(2) 109-9230 Edge-Cutting
	(2) 280-4068 Edge-End	(2) 100-4043 Edge End
	(12) 5P-8823 Bolt-Plow	(12) 5P-8823 Bolt-Plow
	(12) 3K-9770 Nut-Hex	(12) 3K-9770 Nut-Hex

SIDE DUMP BUCKETS

Side Dump Buckets dump both to the front and to the side of the machine - an advantage when working in tight quarters such as street work, tunnel construction and building levees. Side Dump buckets can work conventionally, but when needed a cross-mounted cylinder dumps material to the side.



SIDE DUMP BUCKETS

INTERFACE	DURABILITY	CAPACITY 100%	CAPACITY 110%	SALES MODEL	LINKAGE IDENTIFIER	PART NUMBER	WIDTH	WEIGHT	EDGE TYPE
		YD3 (M3)	YD3 (M3)				IN (MM)	LB (KG)	
Pin-On	Standard	3.75 (2.9)	4.25 (3.2)	950 / 962	E	624-9337	127 (3220)	5549 (2517)	BOCE
Fusion	Standard	4.75 (3.1)	5.25 (3.4)	966GC / 966 / 966XE / 972 / 972XE	H / J	624-9332	145 (3677)	6413 (2909)	BOCE

MULTI-PURPOSE BUCKETS

Multi-Purpose Buckets have an unique four-way action that can load, strip top soil, bull doze, clamp pipe or large chunks of concrete, clean up debris, and many other tasks. Dual hydraulic cylinders power the front half of the bucket to work as a grapple for clamping and moving debris. Closed, the bucket works conventionally. Partial open, the bucket can meter out fill material, or even doze. A versatile design for site cleanup, demolition or similar situations.



MULTI-PURPOSE BUCKETS

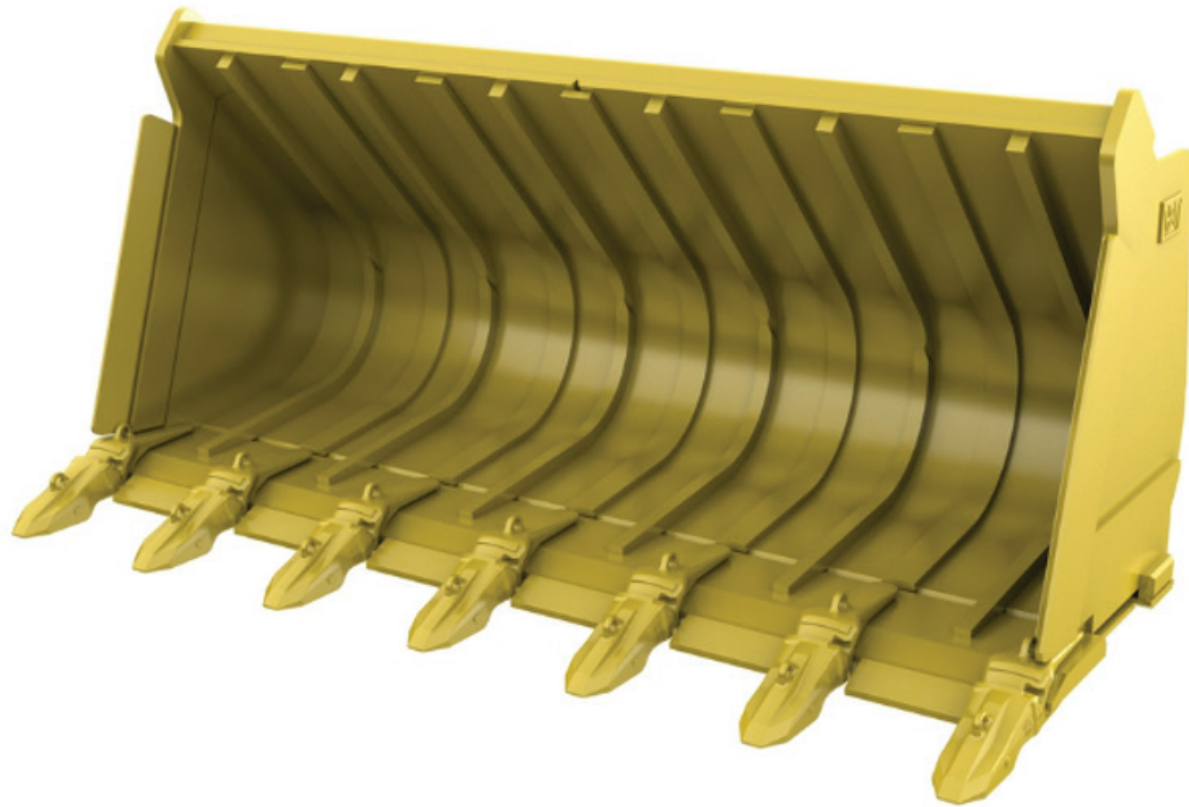
INTERFACE	DURABILITY	CAPACITY 100%	CAPACITY 110%	SALES MODEL	LINKAGE IDENTIFIER	PART NUMBER	WIDTH	WEIGHT	EDGE TYPE
		YD3 (M3)	YD3 (M3)				IN (MM)	LB (KG)	
Pin-On	Standard	3.75 (2.9)	4.25 (3.2)	950 / 962	E	624-9242	116 (2943)	4797 (2176)	BOCE
		4.0 (2.9)	4.5 (3.2)	966GC / 966 / 966XE / 972 / 972XE	H / J	624-9248	127 (3226)	6146 (2788)	Base Edge
Fusion	Standard	4.0 (3.1)	4.5 (3.4)	966GC / 966 / 966XE / 972 / 972XE	H / J	624-9236	127 (3220)	6484 (2941)	BOCE

GET - MULTI-PURPOSE

SALES MODEL	BOCE		CORNER PROTECTORS	BOLT-ON ADAPTERS	BOLT-ON SEGMENTS	
	STANDARD	HD			STANDARD	HD
950/962	139-9229 (30mm)	132-1052 (30mm HD)	174-7948 Corner Protectors	539-5785 2-Strap (A080)	139-9279 (30mm)	107-3394 (68mm HD)
	(2) 139-9230 Edge-Cutting	(2) 135-9666 Edge-Cutting	(1) 253-0062 Guard-Corner RH	(1) 505-4032 Right	(5) 140-7601 Edge-Segment	(5) 132-4715 Edge-Segment
	(2) 4T-8101 Edge-End	(2) 132-1033 Edge-End	(1) 253-0063 Guard-Corner LH	(1) 505-4033 Left	(2) 263-7545 Edge-Segment	(2) 257-1762 Edge-Segment
	(12) 4F-4042 Bolt-Plow	(12) 4F-4042 Bolt-Plow	(4) 8T-9079 Bolt-Plow	(6) 505-4029 Center	(14) 4F-4042 Bolt-Plow	(14) 4F-4042 Bolt-Plow
	(12) 2J-3507 Nut-Hex	(12) 2J-3507 Nut-Hex	(4) 3K-9770 Nut-Hex	(2) 6V-6535 Plow Bolt	(14) 2J-3507 Nut-Hex	(14) 2J-3507 Nut-Hex
				(2) 6V-8360 Plow Bolt		
				(12) 5P-8136 Plow Bolt		
				(4) 2J-5997 Locknut		
				(12) 8J-2933 Nut		
966/972	100-6669 (30mm)	140-6824 (35mm HD)	174-7949 Corner Protectors	539-5795 2-Strap (A090)	100-6667 (30mm)	143-3062 (35mm HD)
	(2) 100-6668 Edge-Cutting	(2) 140-6823 Edge-Cutting	(1) 253-0064 Guard-Corner	(1) 505-4045 Right	(5) 100-6666 Edge-Segment	(5) 140-6870 Edge-Segment Hd
	(2) 3G-6395 Edge-End	(2) 167-7430 Edge End	(1) 253-0065 Guard-Corner	(1) 505-4046 Left	(2) 308-4322 Edge-Segment	(2) 310-4067 Edge-Segment(Hd)
	(12) 5P-8823 Bolt-Plow	(12) 5P-8823 Bolt-Plow	(4) 6V-6535 Bolt-Plow	(6) 505-4044 Center	(14) 5P-8823 Bolt-Plow	(14) 5P-8823 Bolt-Plow
	(12) 3K-9770 Nut-Hex	(12) 3K-9770 Nut-Hex	(4) 3K-9770 Nut-Hex	(4) 3K-9770 Plow Bolt	(14) 3K-9770 Nut-Hex	(14) 3K-9770 Nut-Hex
				(12) 5P-8361 Plow Bolt		
				(4) 2J-5997 Locknut		
				(12)5P-8632 Nut		

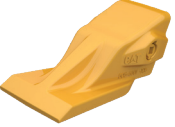





SLAG BUCKETS

Slag (SLG) buckets are designed for continuous, heavy-duty work in hot slag.



SLAG								
INTERFACE	SALES MODEL	MODEL CODE	PART NUMBER	CAPACITY 100%	CAPACITY 110%	WIDTH	WEIGHT	GET / QTY
				YD3 (M3)	YD3 (M3)	IN (MM)	LB (KG)	
Pin-on	972	J	343-8820	4.50 (3.4)	-	128 (3250)	9136 (4144)	BOCE
	980	N	348-8565	5.00 (3.8)	-	134 (3394)	11689 (5302)	BOCE



TIPS						
TIP TYPE	PICTURE	DESCRIPTION	ADVANSYS SIZE CLASS			
			A080	A090	A100	A110
↑ ABRASION RESISTANCE		More usable wear material while maintaining profile during the full life of the tip. Heavy Abrasion tips feature a redesign for the Cat Advansys™ system that results in 11 percent more usable wear material than K Series and a tip shape that stays sharp through the life of the tip.	505-3981	505-3991	505-4001	505-4011
		More usable wear material while maintaining profile during the full life of the tip.	505-3980	505-3990	505-4000	505-4010
		Heavy Duty tips include approximately 60 percent more wear material in the tip body.	505-3982	505-3996	505-4002	505-4012
↓ PENETRATION		Have been designed to maintain wear material and support material where it is needed, while wearing sharp for better penetration.	505-3984	505-3994	505-4004	505-4014
		Cat Advansys™ is built for machine productivity, balancing tip wear material and penetration requirements. Integrated hammerless retention ensures you are back to work in minutes without a separate retainer.			505-4103	505-4113
		Penetration tips are ideal for densely compacted materials. They feature a leading edge with 60 percent less cross-sectional area, allowing for maximum penetration and a single center rib that self-sharpen as it wears.	505-4081	505-4091	505-4101	505-4111

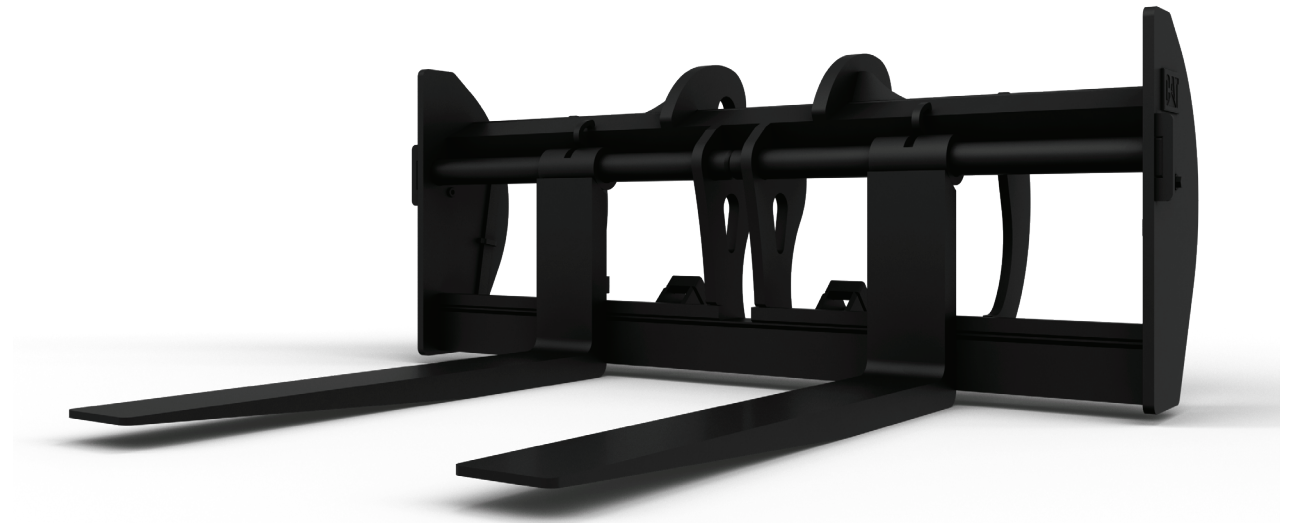


FORKS

Forks are essential tools in general construction and forestry applications. Pallet Forks are a basic part of a loader's kit on the construction site. In forestry applications, Log & Lumber Forks move both finished lumber and logs around the yard. Millyard, Logging, Sorting, and Unloading Grapple Forks work in the mill and in the yard, sorting logs, feeding the mill and unloading trucks. Pipe & Pole Forks move pipe, drill sections, poles and similar materials around mining and drilling sites.

PALLET FORKS

Pallet Forks offer improved operator visibility and are designed to meet a wide variety of material handling needs.



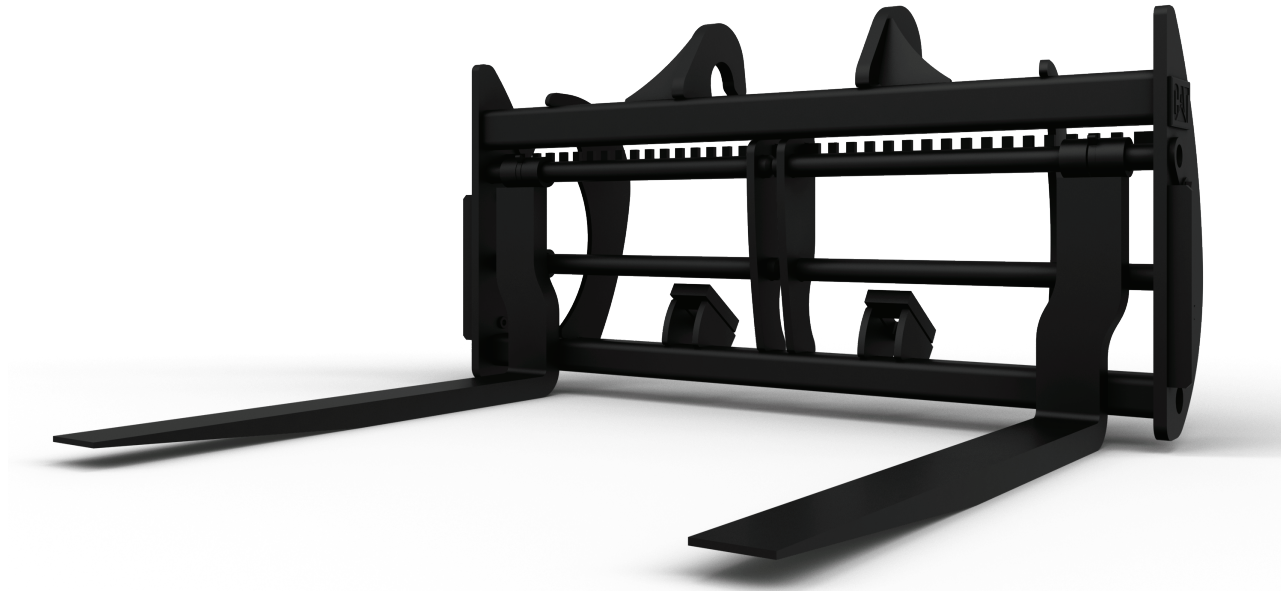
PALLET FORKS						
INTERFACE	SALES MODEL	LINKAGE IDENTIFIER	PART NUMBER	TINE LENGTH	WIDTH	WEIGHT
				IN (MM)	IN (MM)	LB (KG)
Pin-On	966GC / 966 / 966XE / 972 / 972XE	H / J	143-7206	48 (1219)	96 (2438)	2710 (1229)
			143-7207	60 (1524)	96 (2438)	2855 (1295)
			143-7208	72 (1829)	96 (2438)	2995 (1358)
			159-3022	84 (2134)	96 (2438)	3140 (1424)
	980 / 980XE	N	473-9106	72 (1828)	108 (2751)	5472 (2482)
			473-9104	96 (2438)	108 (2751)	5983 (2713)

PALLET FORK CARRIAGE					
INTERFACE	SALES MODEL	LINKAGE IDENTIFIER	PART NUMBER	CARRIAGE WIDTH	WEIGHT
				IN (MM)	LB (KG)
Fusion	950GC / 950 / 962 / 966GC / 966 / 966XE / 972 / 972XE / 980 / 980XE	H / J	530-1861	84 (2134)	1321 (599)

PALLET FORK TINES		
PART NUMBER	TINE LENGTH	WEIGHT
	IN (MM)	LB (KG)
548-3265	60 (1524)	355 (161)
530-1869	72 (1829)	396 (180)

CONSTRUCTION FORKS

Construction Forks are wider than pallet forks and designed for heavy duty applications. Fork tines can be configured to allow tines to either swing or stay in a fixed position



CONSTRUCTION FORK CARRIAGES					
INTERFACE	SALES MODEL	LINKAGE IDENTIFIER	PART NUMBER	CARRIAGE WIDTH	WEIGHT
				IN (MM)	LB (KG)
Fusion	950GC / 950 / 962 / 966GC / 966 / 966XE / 972 / 972XE	A / C / E / H / J	520-7957	96 (2438)	1761 (799)
			520-7968	108 (2743)	1877 (851)
	980 / 980XE / 982 / 982XE	N / P	143-7208	108 (2743)	2538 (1151)

CONSTRUCTION FORK TINES					
SALES MODEL	LINKAGE IDENTIFIER	PART NUMBER	TINE LENGTH	TINE WIDTH	WEIGHT
			IN (MM)	IN (MM)	LB (KG)
950GC / 950 / 962 / 966GC / 966 / 966XE / 972 / 972XE	A / C / E / H / J	520-7985	48 (1220)	7 (180)	1012 (459)
		520-7980	60 (1524)	7 (180)	1150 (521)
		520-7979	72 (1829)	7 (180)	1288 (584)
		520-7986	84 (2133)	7 (180)	1425 (646)
		520-7981	96 (2438)	7 (180)	1562 (708)
980 / 980XE / 982 / 982XE	N / P	523-4200	72 (1829)	9.8 (250)	1592 (722)
		523-4201	84 (2133)	9.8 (250)	1911 (867)
		523-4202	96 (2438)	9.8 (250)	2147 (974)

MILLYARD FORKS

Millyard Forks move and sort logs throughout the processing cycle. The large top clamp closes between the tines to pick and move single logs, while still maintaining the capacity for moving full loads. The curved frame design promotes a rolling action of the logs for smooth loading and unloading. The structure is durable and built to handle heavy loads. The top clamp is built for rigidity and strength.



MILLYARD FORKS							
INTERFACE	SALES MODEL	LINKAGE IDENTIFIER	PART NUMBER	END AREA	TINE LENGTH	WIDTH	WEIGHT
				FT2 (M2)	IN (MM)	IN (MM)	LB (KG)
Pin-On	950 / 962	E	374-7148	14 (1.3)	63 (1609)	92 (2324)	5865 (2660)
	966GC / 966 / 966XE / 972 / 972XE	H / J	506-1946	17 (1.6)	63 (1611)	99 (2508)	6316 (2865)
	980 / 980XE	N	507-6128	18 (1.7)	72 (1829)	109 (2777)	8788 (3986)
Fusion	950 / 962 / 966 / 966XE / 972 / 972XE	E / H / J	383-3523	14 (1.3)	63 (1609)	92 (2324)	6098 (2766)
	980 / 980XE	N	566-1332	18 (1.7)	72 (1829)	109 (2777)	8450 (3833)

MILLYARD POLE FORKS

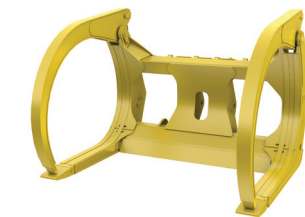
Millyard Pole Forks features a refined frame profile and a top clamp that closes tighter to the frame. The result is positive, secure clamping of single poles as they are moved through the yard. The curved frame design promotes a rolling action of the logs for smooth loading and unloading.



MILLYARD POLE FORKS							
INTERFACE	SALES MODEL	LINKAGE IDENTIFIER	PART NUMBER	END AREA	TINE LENGTH	WIDTH	WEIGHT
				FT2 (M2)	IN (MM)	IN (MM)	LB (KG)
Pin-On	950 / 962	E	374-7148	14 (1.3)	63 (1609)	92 (2324)	5865 (2660)
	966GC / 966 / 966XE / 972 / 972XE	H / J	506-1946	17 (1.6)	63 (1611)	99 (2508)	6316 (2865)
	980 / 980XE	N	507-6128	18 (1.7)	72 (1829)	109 (2777)	8788 (3986)
Fusion	950 / 962 / 966 / 966XE / 972 / 972XE	E / H / J	383-3523	14 (1.3)	63 (1609)	92 (2324)	6098 (2766)
	980 / 980XE	N	566-1332	18 (1.7)	72 (1829)	109 (2777)	8450 (3833)

LOGGING FORKS

Logging Forks feature two independent top clamps that close down on the tine tips. This open profile provides maximum capacity for unloading trucks and feeding the mill. The structures are designed to thrive in the high-load environment of the yard, with reinforcements at key areas.



LOGGING FORKS							
INTERFACE	SALES MODEL	LINKAGE IDENTIFIER	PART NUMBER	END AREA	TINE LENGTH	WIDTH	WEIGHT
				FT2 (M2)	IN (MM)	IN (MM)	LB (KG)
PO	950 / 962	E	379-5408	21 (1.9)	64 (1609)	92 (2332)	5451 (2472)
	966 / 966XE / 972 / 972XE	H / J	624-9038	21 (1.9)	63 (1609)	98 (2501)	5827 (2643)
	980 / 980XE	N	624-9039	26 (2.4)	72 (1826)	110 (2802)	7020 (3184)

UNLOADING GRAPPLE FORKS

Unloading Grapple Forks unload trucks, stack and sort timber at the mill. Tine and clamp design permit quick and gentle loading. Forks are available with a kick-out that unloads the fork even at full lift, enabling higher lumber stacking.



UNLOADING GRAPPLE FORKS								
INTERFACE	SALES MODEL	LINKAGE IDENTIFIER	PART NUMBER	END AREA FT ² (M ²)	TINE LENGTH IN (MM)	WIDTH IN (MM)	WEIGHT LB (KG)	KICK OUT
Pin-On	950 / 962	E	396-8852	27 (2.5)	36 (917)	73 (1855)	4949 (2245)	N
Fusion			377-0722	22 (2.0)	30 (762)	72 (1832)	4253 (1929)	
			624-9002	27 (2.5)	36 (917)	73 (1855)	4870 (2209)	
			361-3084	27 (2.5)	36 (917)	73 (1855)	5664 (2569)	



SORTING GRAPPLE FORKS

Sorting Grapple Forks unload trucks, stack and sort timber at the mill. Tine and clamp design permit quick and gentle loading. Forks are available with a kick-out that unloads the fork even at full lift, enabling higher lumber stacking.

SORTING GRAPPLE FORKS							
INTERFACE	SALES MODEL	LINKAGE IDENTIFIER	PART NUMBER	END AREA FT ² (M ²)	TINE LENGTH IN (MM)	WIDTH IN (MM)	WEIGHT LB (KG)
Pin-On	950 / 962	E	624-9002	28 (2.6)	48 (1219)	73 (1855)	4870 (2209)
			624-9003	33 (3.1)	48 (1219)	76 (1943)	5921 (2686)
Fusion	966 / 966XE / 972 / 972XE	H / J	624-9001	28 (2.6)	48 (1219)	73 (1855)	5205 (2361)

LOG & LUMBER FORKS

Log & Lumber Forks utilize flat fork tines and a raised back. In the forestry industry, log and lumber forks are used to load, unload, move, deck, sort and feed the mill. Their flat tines and raised back are designed specifically for use in handling both unfinished logs and stacked lumber. Cat® Log & Lumber Forks are available with floating, non-swinging tines that can be adjusted horizontally.



LOG & LUMBER FORKS						
INTERFACE	SALES MODEL	LINKAGE IDENTIFIER	PART NUMBER	TINE LENGTH	WIDTH	WEIGHT
				IN (MM)	IN (MM)	LB (KG)
Pin-On	950 / 962	E	379-2323	48 (1219)	96 (2438)	2504 (1136)
			379-2340	60 (1524)		2948 (1337)
			379-2344	72 (1829)		2952 (1339)
			379-2346	96 (2438)		3367 (1527)
Fusion	950 / 962 / 966GC / 966 / 966XE / 972 / 972XE	E / H / J	435-4068	48 (1219)	84 (2134)	2321 (1053)
			379-2063		96 (2438)	2366 (1073)
			435-4634	60 (1524)	84 (2134)	2765 (1254)
			379-2109		96 (2438)	2809 (1274)
			435-4684	72 (1829)	84 (2134)	2901 (1316)
			379-2199		96 (2438)	2946 (1336)
			435-4686	96 (2438)	84 (2134)	3183 (1444)
			379-2321		96 (2438)	3228 (1464)

SEMI-MILLYARD TOP CLAMP

The Semi-Millyard Top Clamp increases the capacity and holding ability of a Log & Lumber fork when moving wood around the yard. The top clamp closes between the tines for clamping small loads, and can also open up to 90 degrees to handle large palletized loads.



SEMI-MILLYARD TOP CLAMP							
INTERFACE	SALES MODEL	LINKAGE IDENTIFIER	PART NUMBER	TINE LENGTH	WIDTH	END AREA	WEIGHT
				IN (MM)	IN (MM)	FT ² (M ²)	LB (KG)
Pin-On	950 / 962	E	382-7885	48 (1219)	76 (1923)	16 (1.5)	4370 (1982)
Fusion			380-8227				4425 (2007)

PIPE & POLE FORKS

Cat Pipe & Pole Forks are designed and built for use in oil and gas field drilling, pipe line construction and above-ground utilities work. They feature a wide carriage, fixed tines and a full-width, doubleacting clamp to keep single or multiple pieces of pipe secure during transport and while loading and unloading. The clamp can be positioned to hold large or small diameter pipe or poles against the tines, or positioned up and out of the way for handling other material. Clamping force on pipe is enough to keep it secure and not cause damage.



PIPE & POLE FORKS

INTERFACE	SALES MODEL	LINKAGE IDENTIFIER	PART NUMBER	TINE LENGTH	WIDTH	WEIGHT
				IN (MM)	IN (MM)	LB (KG)
Pin-On	950 / 962	E	377-2845	72 (1829)	111 (2813)	4500 (2041)
	966 / 966XE / 972 / 972 XE	H / J	447-9939	96 (2439)	123 (3131)	6650 (3016)
Fusion	950 / 962	E	365-1316	72 (1829)	111 (2813)	4556 (2067)
	966 / 966XE / 972 / 972 XE	H / J	365-1318	96 (2439)	123 (3131)	6600 (2994)

EXTENDABLE MATERIAL HANDLING ARMS

The Extendable Material Handling Arm is used in industrial, construction and agricultural applications, to pick-up, carry and load a variety of materials and equipment.

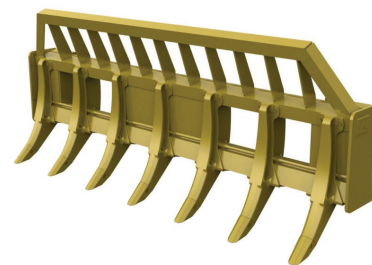


EXTENDABLE MATERIAL HANDLING ARMS

INTERFACE	SALES MODEL	LINKAGE IDENTIFIER	PART NUMBER	MIN LENGTH	MAX LENGTH	WEIGHT
				IN (MM)	IN (MM)	LB (KG)
Pin-On	980 / 980XE	N	624-9047	128 (3247)	188 (4771)	2807 (1273)
Fusion	950 / 962 / 966GC / 966 / 966XE / 972 / 972XE	E / H / J	624-9046	123 (3124)	183 (4648)	1560 (708)

RAKES

Loader Rakes are large capacity, sized for piling brush, stacking or carrying debris and loading trucks. Features include thick, fabricated teeth, a heavy duty push bar and a serrated tree pusher. The high brush rack retains the load better, prevents back spillage and increases carrying capacity. Models are available which feature an integral hydraulic top clamp.



RAKES

INTERFACE	SALES MODEL	LINKAGE IDENTIFIER	PART NUMBER	WIDTH	NUMBER OF TEETH	TOOTH SPACING	WEIGHT
				IN (MM)		IN (MM)	LB (KG)
Pin-On	966 / 966XE / 972 / 972XE	H / J	230-5849	132 (3353)	9	15 (387)	4680 (2123)
Fusion	950 / 962	C / E	317-1242	120 (3047)		14 (349)	3257 (1477)
	966 / 966XE / 972 / 972XE	H / J	317-1243	132 (3353)		15 (387)	4597 (2085)

SNOW

Cat® Snow Products handle the toughest snow removal jobs. When temperatures drop and the snow falls, speed and reliability matter. With the right bucket or attachment, Cat wheel loaders can move a lot of snow in one pass, whether you're clearing parking lots, roadways or airport runways.



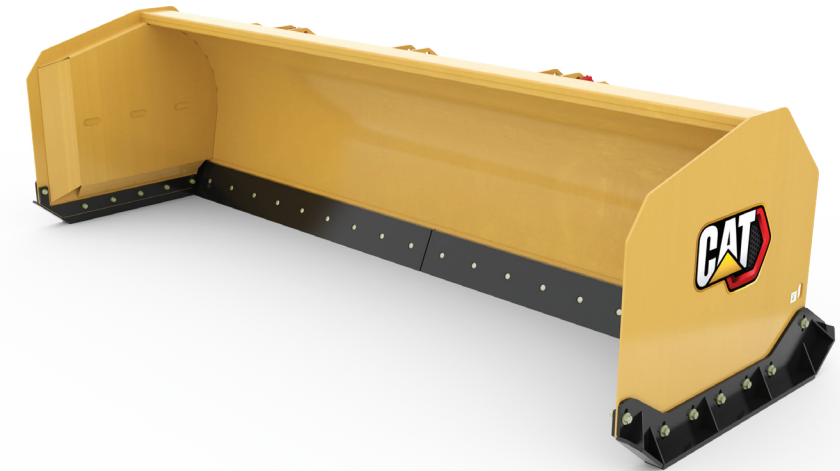
HYDRAULIC ANGLE SNOW BLADES

Hydraulic Angle Snow Blades are great for clearing roads, drives, and parking lots. The hydraulic angle adjustability allows for casting snow exactly where it needs to go.



SNOW PUSH

Snow Push clear the most snow possible with every pass. Moldboard and rubber over-flaps keep snow in the push, not flowing over the top.



HYDRAULIC ANGLE SNOW BLADES						
INTERFACE	SALES MODEL	LINKAGE IDENTIFIER	PART NUMBER	WIDTH	BLADE HEIGHT	WEIGHT
				IN (MM)	IN (MM)	LB (KG)
Fusion	950GC / 950 / 962 / 966GC / 966 / 966XE / 972 / 972XE	A / C / E / H / J	524-6848	144 (3658)	42 (1067)	3020 (1370)
	950GC / 950 / 962 / 966GC / 966 / 966XE / 972 / 972XE / 980 / 980XE	A / C / E / H / J / N	524-6849	168 (4267)		3182 (1443)
	966GC / 966 / 966XE / 972 / 972XE / 980 / 980XE	H / J / N	524-6850	54 (1372)	3422 (1552)	

SNOW PUSH						
INTERFACE	SALES MODEL	LINKAGE IDENTIFIER	PART NUMBER	WIDTH	BLADE HEIGHT	WEIGHT
				FT (MM)	IN (MM)	LB (KG)
Fusion	950GC / 950 / 962 / 966GC / 966 / 966XE / 972 / 972XE / 980 / 980XE	A / C / E / H / J / N	524-6872	15 (4572)	56 (1422)	6912 (3135)
			524-6873	20 (6096)		8230 (3733)
			524-6874	25 (7620)		9549 (4331)
	966 / 966XE / 972 / 972XE / 980 / 980XE	H / J / N	524-6875	30 (9144)		10859 (4926)

U/V ANGLE BLADES

U/V Angle Blades are blades that do it all: plow, push, cast, and carry.



V-PLOWS

V-Plows aggressive radiused "V" wing profile and angle enables excellent initial drift breaking capability combined with superior side snow casting ability. Snow is cast to both sides, clearing a path for immediate traffic or further clearing passes.



UV ANGLE BLADES						
INTERFACE	SALES MODEL	LINKAGE IDENTIFIER	PART NUMBER	WIDTH	BLADE HEIGHT	WEIGHT
				IN (MM)	IN (MM)	LB (KG)
Fusion	950GC / 950 / 962 / 966GC / 966 / 966XE / 972 / 972XE	A / C / E / H / J	524-6865	132 (3353)	40 (1016)	2900 (1315)
	950GC / 950 / 962 / 966GC / 966 / 966XE / 972 / 972XE / 980 / 980XE	A / C / E / H / J / N	524-6866	144 (3658)		3000 (1361)
			524-6867	168 (4267)		3150 (1429)

V PLOWS						
INTERFACE	SALES MODEL	LINKAGE IDENTIFIER	PART NUMBER	WIDTH	HEIGHT	WEIGHT
				IN (MM)	IN (MM)	LB (KG)
Fusion	950GC / 950 / 962	A / C / E	314-2510	160 (4057)	82 (2070)	2765 (1254)
	966GC / 966 / 966XE / 972 / 972XE	H / J	314-2511	176 (4456)	84 (2129)	2917 (1323)

THANK YOU FOR CHOOSING A CAT® WHEEL LOADER

Cat® wheel loaders make your material handling and loading jobs safer, faster, more precise and profitable. Cat front end loaders set the standard for reliability, productivity, fuel efficiency, versatility and operator comfort.

UPGRADE/REPAIR & REBUILD KITS

Customize your Cat Wheel Loader to fit your needs with a variety of specialized products designed for your industry and application. These features, accessories and attachments help optimize and maintain your machine, so you can get the most out of every use. Please reference Service Information System (SIS) for the most up to date information.

COMMON MAINTENANCE PARTS

Preventative maintenance helps extend the life of your machine and protect your investment. Only Cat Parts are made to match your machine's specific filtration needs, lubrication requirements and exact maintenance cycles. That's why our parts kits make it easier to maintain your machine and keep it running at peak performance.

LET'S DO THE WORK.™

PEBJ0223

June 2023

©2023 Caterpillar. All Rights Reserved. CAT, CATERPILLAR, LET'S DO THE WORK, their respective logos, "Caterpillar Corporate Yellow", the "Power Edge" and Cat "Modern Hex" trade dress as well as corporate and product identity used herein, are trademarks of Caterpillar and may not be used without permission.

